

# YOKOTA Flight Training Center CESSNA 172 T-41 N4972R / N5241F

Revised: 1 February 2014

## CHECKLIST version 7.1

DO NOT REMOVE FROM AIRCRAFT

### YOKOTA AB

ATIS.....	128.40
CLEARANCE DELIVERY.....	131.40
GROUND.....	133.20
TOWER.....	134.30
YOKOTA APPROACH (<5000').....	123.80
YOKOTA APPROACH (>5000').....	118.30
BASE DISPATCH.....	119.00
AERO CLUB.....	120.30
DME.....	113.80
ILS RWY 36 (357°).....	109.70
ILS RWY 18 (177°).....	108.70

### ATSUGI NAF

YOKOSUKA VOR (HYE).....	116.20
TOWER.....	126.20
GROUND.....	126.20
DME.....	115.10

### COMMON AREA FREQUENCIES

TACHIKAWA TOWER.....	118.85
TOKYO TCA.....	124.75
HANEDA VOR / DME (HME).....	112.20
HANEDA ATIS.....	128.80
CHOFU RADIO.....	130.80
SEKIYADO VOR/DME (SYE) (117.0).....	118.00
IRUMA TOWER.....	126.20

### CROSS COUNTRY FREQUENCIES

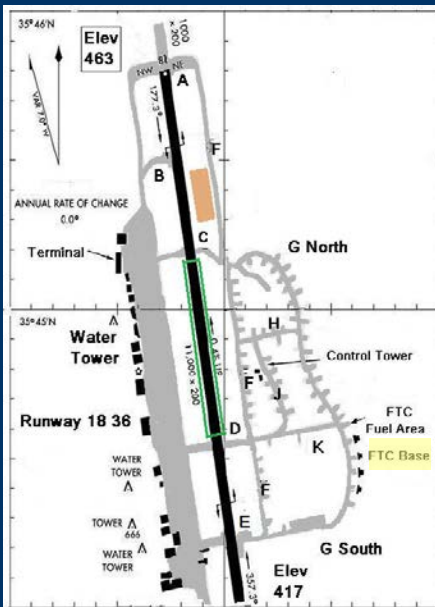
OSHIMA RADIO.....	118.60
MIHARA VOR/DME (OSE).....	109.85
IZU REMOTE.....	124.30
UTSUNOMIYA APPROACH.....	120.10
FUKUSHIMA RADIO.....	118.05
FUKUSHIMA VOR/DME (FKE).....	113.45
DAIGO VORTAC (GOC).....	115.30
FUKUSHIMA ILS (01).....	110.50
NASU VOR/DME (NZE).....	121.40
SHIZUOKA RADIO.....	118.00
SHIZUOKA VOR/DME.....	110.65
SHIZUOKA ILS (30).....	109.30
SENDAI TOWER.....	135.75
SENDAI VOR/DME (SDE).....	116.30
SENDAI ILS (27).....	111.70

### FLIGHT SERVICE CENTERS

TOKYO (HAKONE) FSC.....	134.70
TOKYO (KUMAGAYA) FSC.....	135.75
TOKYO (MATSUMOTO) FSC.....	134.85
TOKYO (NASU) FSC.....	135.65
TOKYO (NIJIMA) FSC.....	124.30
TOKYO (YAMANASHI) FSC.....	127.15
SENDAI (AKITA) FSC.....	134.70
SENDAI (YUUBONZAN) FSC.....	135.75
SENDAI (NIIGATA) FSC.....	134.85
SENDAI (SENDAI) FSC.....	135.65
SENDAI (SADO) FSC.....	124.30

### RJTY Runway and Airfield Data INTERSECTION DEPARTURE DISTANCE

RWY	A	C	D	E
18	11,500	7,300	3,350	No Takeoff
36	No Takeoff	3,700	7,650	9,650



## 1. CABIN

- EMERGENCY AND SAFETY EQUIPMENT..... CHECK
- HOBBS TIME..... CHECK
- VOR CHECK (IFR)..... CHECKED WITHIN 30 DAYS
- A.R.O.W..... CHECK
- CONTROL AND THROTTLE LOCK..... REMOVE
- IGNITION SWITCH..... OFF

### WARNING

When turning on master switch using external power source, or pulling prop through by hand, treat as if ignition switch were on. **Do not stand, or allow anyone to stand, within arc of prop** since loose, broken wire or component malfunction could cause the propeller to rotate.

Item 6 thru 16 should be completed as quickly as possible to conserve battery power.

- BATTERY MASTER SWITCH..... ON
- AVIONICS SWITCH..... ON
- AVIONICS COOLING FAN CONFIRM ON - SWITCH..... OFF
- FLAPS..... FULL EXTEND
- FUEL GAUGES..... CHECK QUANTITY
- TACH TIME..... CONFIRM
- PITOT HEAT..... REMOVE COVER TEST AS REQUIRED
- LIGHTS (EXTERIOR/INTERIOR)..... CHECK
- BATTERY MASTER SWITCH..... OFF
- LIGHT SWITCHES..... OFF
- PITOT HEAT..... OFF
- CO DETECTOR..... TEST
- LOOSE ITEMS..... SECURE

## 2. EMPENNAGE

EXTERIOR INSPECTION, CHECK CONDITION OF AIRPLANE. LOOK FOR MISSING/DAMAGED SCREWS, RIVETS, ANTENNAS ON TOP/BOTTOM OF AIRCRAFT. IF SEDIMENT/WATER INSIDE SAMPLED FUEL, DON'T DUMP ON GROUND. DUMP IN FUEL BARREL LABELED "DRAINED FUEL".

- BAGGAGE DOOR..... CLOSED
- AUTOPILOT STATIC SOURCE (LEFT AND RIGHT).... CHECK
- ELEVATOR/ELEVATOR TRIM..... CHECK
- RUDDER..... CHECK
- CONTROL CABLES..... CHECK
- ANTENNAS (ELT, VOR, EFIS)..... CHECK
- TIE-DOWN..... REMOVE

## 3. RIGHT WING

- FLAP..... CHECK
- AILERON..... CHECK
- WING TIP..... CHECK
- LEADING EDGE & WING STRUT..... CHECK
- TIE-DOWN..... REMOVE
- MAIN GEAR TIRE/BRAKE/STRUT..... CHECK
- CHOCK..... REMOVE
- DOOR HINGE..... CHECK
- TEMP PROBE..... CHECK
- RIGHT FUEL TANK SUMP..... SAMPLE
- FUEL QUANTITY..... CHECK WITH DIPSTICK
- FUEL CAP..... VENTED & SECURE

## 4. FUSELAGE

- WINDSHIELD / COWLING / ANTENNAS..... CHECK
- ENGINE OIL..... CHECK (6-8 QTS)
- FUEL STRAINER..... DRAIN FOR 2 SEC.
- OIL FILLER ACCESS PANEL..... SECURE (BUTTON FLUSH)
- PROPELLER & SPINNER..... CHECK
- ENGINE INLETS..... CHECK
- AIR FILTER..... CHECK
- NOSE GEAR TIRE/STRUT..... CHECK (APPROX 2")
- STATIC SOURCE OPENING..... CHECK
- BATTERY ACCESS PANEL..... SECURE

## 5. LEFT WING

- LEFT FUEL TANK SUMP..... SAMPLE
- FUEL QUANTITY..... CHECK WITH DIPSTICK
- FUEL CAP..... SECURE
- DOOR HINGE..... CHECK
- CHOCK..... REMOVE
- MAIN GEAR TIRE/BRAKE/STRUT..... CHECK
- TIE-DOWN..... REMOVE
- PITOT TUBE COVER..... REMOVED
- PITOT TUBE..... CHECK
- STALL WARNING HORN / VENT..... CHECK
- FUEL TANK VENT..... CHECK
- LEADING EDGE & WING STRUT..... CHECK
- WING TIP..... CHECK
- AILERON..... CHECK
- FLAP..... CHECK

STEP TO FRONT OF AIRCRAFT VISUAL INSPECTION PANELS - FLAPS - GEAR - RUDDER - TIE-DOWNS - CHOCKS - COWLING - RED/YELLOW FLAGS

## 6. BRIEFINGS

- CREW BRIEFING (if applicable)
  - PIC DUTIES, CREW DUTIES
- TRANSFER OF AIRCRAFT CONTROL
- DEPARTURE BRIEFING
  - TYPE OF TAKEOFF (NORMAL, SHORT FIELD, SOFT FIELD)
  - V-SPEED (V<sub>R</sub>65MPH, V<sub>X</sub>73MPH, V<sub>Y</sub>89MPH, V<sub>GLIDE</sub>86MPH)
  - TAKEOFF DISTANCE AND AVAILABLE RUNWAY DISTANCE
  - INITIAL HEADING AND ALTITUDE
  - EMERGENCY PROCEDURES TAKEOFF, AFTER TAKEOFF, CLIMB
- PASSENGER BRIEFING (if applicable)
  - OPERATION OF SEAT BELTS AND SHOULDER HARNESSES
  - OPERATION OF DOOR AND WINDOW LATCHES
  - OPERATION OF HEATING AND AIR VENTS
  - OPERATION OF INTERCOM AND USE OF HEADSETS
  - PASSENGER NONINTERFERENCE WITH FLIGHT CONTROLS
  - NO SMOKING IN AIRCRAFT
  - NORMAL / EMERGENCY EXITS AND EGRESS PROCEDURES
  - EMERGENCY EQUIPMENT (LIFE VESTS/FIRST AID KIT)

## 7. CONTROL CHECKS

- DOORS..... CLOSED AND LOCKED
- FLIGHT CONTROLS..... FREE & CORRECT
- ELEVATOR TRIM..... FLUSH W/ FULL UP ELEVATOR
- FUEL QUANTITY..... CHECK TANKS/FUEL FLOW GAUGES
- FUEL SELECTOR VALVE..... BOTH

## 8. BEFORE STARTING ENGINE

- PREFLIGHT INSPECTION..... COMPLETE
- CREW/DEPARTURE BRIEFING..... COMPLETE
- PASSENGER BRIEFING..... COMPLETE
- SEATS..... ADJUST AND CONFIRM LOCKED
- SEAT BELTS/HARNESS..... FASTEN
- LIGHT AND PITOT HEAT SWITCHES..... OFF
- CIRCUIT BREAKERS..... CHECK IN

## 9. STARTING ENGINE

- PRIMER..... 0-3 STROKES AS REQUIRED-**IN & LOCKED**
- CARBURETOR HEAT..... OFF
- THROTTLE..... OPEN ¼ INCH (**CLOSED** IF ENGINE IS **HOT**)
- MIXTURE..... RICH
- BRAKES..... HOLD
- BEACON LIGHT..... ON
- PROPELLER AREA..... **CLEAR**
- MASTER SWITCH..... ON
- IGNITION SWITCH..... START (MAX 30 SECONDS)
- THROTTLE..... **1000 RPM**
- AMMETER..... CHECK GREEN **CHARGE**
- FUEL FLOW... SET FUEL ON BOARD(AUTO+STEP / STEP)
- OIL PRESSURE..... CHECK GREEN W/IN 30 SEC MAX
- NAV LIGHT (NIGHT)..... ON
- FLAPS..... RETRACT
- AVIONICS/PFD/MFD AUTOPILOT SWITCHES..... ON

## 10. AVIONIC SETUP

### GPS / PFD /MFD

- AVIATION DATABASE..... CONFIRM EXPIRATION DATE
- PFD / MFD..... CHECK
- FUEL ON BOARD..... CHECK TANKS/FUEL FLOW/GPS
- PRESENT POSITION..... CONFIRM
- FLIGHT PLAN/VNAV..... PROGRAM & ACTIVATE
- CDI/BEARING POINTERS..... SET AND CHECK
- BARO SETTING FOR EFIS AND ALTIMETER..... SET
- HDG/ALT/IAS/MIN BUGS..... SET
- AUTOPILOT..... **ON / TEST / STANDBY**

### RADIOS

- AUDIO PANEL..... SET PILOT/COPILOT VOLUME & SQUELCH
- ATIS..... OBTAIN (IF AVAILABLE)
- COMM & NAV FREQUENCIES..... SET DESIRED

### TRANSPONDER

- MODE..... STANDBY
- SQUAWK CODE..... SET **1200** OR AS INSTRUCTED

## 11. ENGINE RUN-UP

- MIXTURE..... RICH
- THROTTLE / CLEAR AREA..... **1700 RPM**
- MAGNETOS..... CHECK (**MAX125/MAX DIFF50**)
- CARBURETOR HEAT..... CHECK RPM DROP THEN **OFF**
- SUCTION GAUGE..... CHECK (**4.6-5.4**)
- ENGINE INSTRUMENTS..... CHECK GREEN
- AMMETER..... CHECK GREEN
- THROTTLE..... CHECK IDLE
- THROTTLE..... **1000 RPM**
- THROTTLE FRICTION..... SET

----- **IF MAGNETO DROP EXCEEDS LIMITS** -----

- THROTTLE..... 2000 RPM
  - MIXTURE: LEAN TO RPM DROP 20 SECONDS THEN RICH
  - THROTTLE..... 1700 RPM
  - MAGNETO..... CHECK (**MAX125/MAX DIFF50**)
- If MAGNETO drop still out of limits **ABORT Flight Shutdown**

## ATC LIGHT SIGNALS

COLOR/TYPE OF SIGNAL	AIRCRAFT ON GROUND	AIRCRAFT IN FLIGHT
<b>Steady Green</b> —————	Cleared for takeoff	Cleared to land
<b>Flashing Green</b> - - - - -	Cleared for taxi	Return for landing (to be followed by steady green)
<b>Steady Red</b> —————	STOP	Give way to other aircraft and continue circling
<b>Flashing Red</b> - - - - -	Taxi clear of runway in use	Airport unsafe, do not land
<b>Flashing White</b> - - - - -	Return to starting point on airport	Not applicable
<b>Alternating Red / Green</b> - - - - -	Exercise extreme caution	Exercise extreme caution

Acknowledge all light signals by flashing landing light or rocking wings.

## PERFORMANCE DATA

TAKE-OFF DATA											
TAKE-OFF DISTANCE FROM HARD SURFACE RUNWAY, FLAPS 10°											
Gross Weight Lbs	IAS MPH	HEAD KNOTS	At Sea Level 59° F		At 2500' 50° F		At 5000' 41° F		At 7500' 32° F		
			Ground Roll	Total to clear 50' Obs	Ground Roll	Total to clear 50' Obs	Ground Roll	Total to clear 50' Obs	Ground Roll	Total to clear 50' Obs	
2500	70	10	0	600	1205	720	1420	875	1715	1050	2080
			20	250	640	310	770	390	955	485	1190
			0	445	935	535	1085	645	1290	770	1525
2200	65	10	0	295	690	355	810	440	970	530	1160
			20	170	475	215	565	270	690	335	835
			0	320	715	380	820	460	960	545	1115
1900	61	10	0	205	520	245	600	300	710	365	830
			20	110	345	140	405	175	485	220	580
			0	205	520	245	600	300	710	365	830

Notes: 1. Increase distance 10% for each 25° F above standard temperature for particular altitude  
2. For operation on a dry, grass runway, increase distance (both "ground roll" and "total to clear 50ft obstacle") by 7% of the "total to clear 50ft obstacle" figure.

CRUISE FUEL CONSUMPTION									
Conditions: 2550 Lbs Recommended Lean Mixture									
Pressure Altitude Feet	RPM	20° C Below Standard Temp		Standard Temperature		20° C Above Standard Temp			
		%BPH	GPH	%BPH	GPH	%BPH	GPH	%BPH	GPH
2000	2550	---	---	76	10.2	72	9.6	77	10.3
	2500	69	9.2	64	8.7	61	8.3	68	9.1
	2400	67	9.2	64	8.7	61	8.3	68	9.1
	2300	61	8.3	58	7.9	55	7.6	62	8.4
	2200	55	7.5	52	7.2	49	6.9	56	7.7
4000	2550	---	---	76	10.2	72	9.6	77	10.3
	2500	73	9.7	68	9.2	65	8.7	72	9.6
	2400	65	8.8	62	8.3	58	8.0	65	8.7
	2300	58	8.0	55	7.6	52	7.3	59	8.1
	2200	52	7.3	49	6.9	47	6.6	54	7.4
6000	2550	---	---	76	10.1	72	9.6	77	10.3
	2500	69	9.3	65	8.8	62	8.4	69	9.3
	2400	62	8.4	59	8.0	56	7.6	63	8.3
	2300	56	7.7	53	7.3	50	7.0	57	7.7
	2200	50	7.0	47	6.7	44	6.4	51	7.1
8000	2550	---	---	76	10.1	72	9.6	77	10.3
	2500	73	9.8	69	9.2	65	8.7	72	9.6
	2400	66	8.8	62	8.4	59	8.0	66	8.8
	2300	59	8.1	56	7.7	53	7.3	60	8.2
	2200	47	6.7	45	6.4	42	6.1	49	6.8
10,000	2550	---	---	76	10.1	72	9.6	77	10.3
	2500	69	9.3	65	8.8	62	8.4	69	9.3
	2400	63	8.5	59	8.1	56	7.7	63	8.3
	2300	57	7.8	53	7.4	50	7.0	57	7.7
	2200	51	7.1	48	6.8	45	6.5	51	7.1
12,000	2550	---	---	76	10.1	72	9.6	77	10.3
	2500	69	9.3	65	8.8	62	8.4	69	9.3
	2400	66	8.9	62	8.4	59	8.0	66	8.9
	2300	60	8.2	56	7.7	53	7.4	60	8.2
	2200	54	7.5	51	7.1	48	6.7	54	7.5

LANDING DATA									
LANDING DISTANCE ON HARD SURFACE RUNWAY NO WIND - 30° FLAPS - POWER OFF									
Gross Weight Lbs	Approach IAS MPH	At Sea Level 59° F		At 2500' 50° F		At 5000' 41° F		At 7500' 32° F	
		Ground Roll	Total to clear 50' Obs	Ground Roll	Total to clear 50' Obs	Ground Roll	Total to clear 50' Obs	Ground Roll	Total to clear 50' Obs
2500	69	610	1200	640	1260	685	1335	725	1410
		560	1100	590	1165	620	1220	660	1290
		60	500	980	1030	550	1080	580	1140

Notes: 1. Reduce landing distance 10% for each 5 knots headwind  
2. For operation on a dry, grass runway, increase distance (both "ground roll" and "total to clear 50ft obstacle") by 20% of the "total to clear 50ft obstacle" figure.

## CROSSWIND COMPONENT CHART Reference Checklist Supplement

YOKOTA AB (042-552-2510)

BASE OPERATIONS.....225-7214 (EXT 5-7214)

## 12. BEFORE TAXI

1. TAXI INSTRUCTIONS ..... OBTAIN
2. TAXI LIGHTS ..... ON
3. PARKING BRAKES ..... RELEASE
4. MIXTURE ..... LEAN FOR TAXI

## 13. TAXI

1. BRAKES ..... TEST
2. FLIGHT INSTRUMENTS ..... CHECK

## 14. BEFORE TAKEOFF CHECK

1. AUTOPILOT ..... DISC AND RDY LT ONLY
2. FLAPS ..... SET & CHECK
3. CARBURETOR HEAT ..... OFF
4. HSI/COMPASS ..... CHECK
5. TAKEOFF CLEARANCE ..... OBTAIN  
-----CLEARED FOR TAKEOFF-----
6. STROBE AND NAV LIGHTS(NIGHT) ..... ON
7. LANDING LIGHT ..... ON
8. MIXTURE ..... RICH
9. TIME OFF ..... NOTE

## 15. NORMAL TAKEOFF

1. FLAPS ..... UP
2. THROTTLE ..... FULL OPEN
3. ROTATE (V<sub>R</sub>) ..... 66 MPH
4. CLIMB SPEED (V<sub>y</sub>) ..... 89 MPH

## 16. SHORT-FIELD TAKEOFF

1. FLAPS ..... 10°
2. BRAKES ..... APPLY
3. THROTTLE ..... FULL OPEN
4. BRAKES ..... RELEASE
5. ROTATE ..... 60 MPH
6. CLIMB SPEED ..... 70 MPH  
-----CLEAR OF OBSTRUCTION-----
7. AIRSPEED (V<sub>y</sub>) ..... 89 MPH
8. FLAPS ..... RETRACT AT SAFE ALTITUDE (>50'AGL)

## 17. SOFT-FIELD TAKEOFF

1. FLAPS ..... 10°
2. ELEVATOR CONTROL ..... KEEP PRESSURE OFF NOSE WHEEL
3. THROTTLE ..... SMOOTHLY TO FULL OPEN
4. LIFTOFF ..... SLOWEST POSSIBLE AIRSPEED
5. ACCELERATE IN GROUND EFFECT ..... 89 MPH
6. CLIMB (V<sub>y</sub>) ..... 89 MPH
7. FLAPS ..... RETRACT AT SAFE ALTITUDE (>50'AGL)

## 18. CLIMB

1. AIRSPEED ..... 86-97 MPH
2. CARBURETOR HEAT ..... OFF
3. THROTTLE ..... FULL OPEN
4. MIXTURE (ABOVE 3000' AS REQUIRED) ..... RICH
5. FLAPS ..... RETRACT

## 19. CRUISE

1. CIRCUIT BREAKERS ..... CHECK
2. LANDING/TAXI LIGHTS ..... AS REQUIRED
3. THROTTLE ..... 2200-2600 RPM
4. MIXTURE ..... LEAN TO PEAK (<75%BHP)
5. ENGINE GAUGES ..... CHECK
6. FUEL SELECTOR SWITCH ..... SELECT
7. FUEL TRANSFER SWITCH ..... AS REQUIRED

MAKE SURE RESPECTIVE MAIN TANK FUEL IS APPROPRIATELY DEPLETED PRIOR TO FUEL TRANSFER. TRANSFER LEFT WHEN FUEL SELECTOR IS ON RIGHT MAIN TANK. TRANSFER RIGHT WHEN FUEL SELECTOR IS ON LEFT MAIN TANK. USE CARBURETOR HEAT WHEN IN CRUISE FLIGHT WITH POWER SETTINGS LESS THAN 2200 RPM. WHEN CRUISING ALTITUDE AT OR ABOVE 5000' MSL, SWITCH FUEL SELECTOR VALVE FROM BOTH TO LEFT OR RIGHT TANK.

**WARNING - IMPROPER LEANING PROCEDURES WILL GREATLY REDUCE ENDURANCE.**

## 20. DESCENT

1. LANDING LIGHT ..... ON
2. CARBURETOR HEAT ..... AS REQUIRED
3. THROTTLE ..... AS REQUIRED
4. MIXTURE ..... ADJUST
5. FUEL SELECTOR VALVE ..... BOTH

## 21. BEFORE LANDING

1. LANDING / TAXI LIGHTS ..... ON
2. CARBURETOR HEAT ..... ON
3. MIXTURE ..... RICH
4. FUEL SELECTOR VALVE ..... BOTH
5. SEATS BELTS AND HARNESSES ..... SECURE
6. AUTOPILOT ..... DISC AND RDY LT ONLY

## 22. NORMAL LANDING

1. AIRSPEED ..... 77-86 MPH (FLAPS UP)
2. WING FLAPS (BELOW 100MPH) ..... AS REQUIRED
3. AIRSPEED ..... 70-81 MPH (FLAPS DOWN)
4. TOUCHDOWN ..... MAIN WHEELS FIRST
5. LANDING ROLL ..... LOWER NOSE WHEEL GENTLY
6. BRAKING ..... MIN REQUIRED

## 23. SHORT-FIELD LANDING

1. WING FLAPS ..... FULL FLAPS
2. AIRSPEED ..... 69 MPH
3. TOUCHDOWN ..... MAIN WHEELS FIRST
4. BRAKING ..... APPLY HEAVILY
5. FLAPS ..... RETRACT

## 24. SOFT-FIELD LANDING

1. WING FLAPS ..... FULL FLAPS
2. AIRSPEED ..... 69 MPH
3. TOUCHDOWN ..... CUSHION WITH LOW POWER
4. NOSE WHEEL ..... KEEP OFF GROUND

## 25. BALKED LANDING- GO AROUND

1. THROTTLE ..... FULL OPEN
2. CARBURETOR HEAT ..... OFF
3. FLAPS ..... RETRACT TO 20°
4. AIRSPEED ..... 70 MPH
5. FLAPS ..... RETRACT AT SAFE ALTITUDE

## 26. AFTER CLEARING RUNWAY

1. TIME ON ..... NOTE
2. FLAPS ..... RETRACT
3. CARBURETOR HEAT ..... OFF
4. TRANSPONDER ..... STANDBY / 1200
5. LANDING LIGHT ..... OFF
6. PITOT HEAT ..... OFF
7. TAXI LIGHT ..... ON
8. STROBE LIGHT ..... OFF
9. GROUND ..... TAXI

## 27. SHUTDOWN

1. BRAKE ..... SET AND HOLD
2. AVIONICS / PFD / MFD / AUTOPILOT SWITCH ..... OFF
3. THROTTLE ..... 1000 RPM
4. MAGNETO GROUND CHECK ..... CHECK
5. MIXTURE ..... CUT OFF
6. IGNITION SWITCH ..... OFF WHEN PROP STOPS
7. MASTER SWITCH ..... OFF
8. LIGHTS (EXTERIOR/INTERIOR) ..... OFF

## 28. REFUELING

USE AVGAS (100/100LL) OR MOGAS (MINIMUM OCTANE 91) SERVICE BOTH TANKS TO FULL TOP (18 GALLONS EACH / 36 GALLONS TOTAL) UNLESS SPECIFICALLY REQUESTED OTHERWISE. **NOTE-** INTERNAL WING TIP TANKS SHOULD BE SERVICED **AS REQUIRED** (23 GALLONS USABLE / 11.5 GALLONS EACH). **WHEN ADDING OIL, REFILL USING INCREMENTS OF WHOLE QUARTS. FUELING NOT PERMITTED IN RAIN, AT NIGHT, OR WITH LIGHTNING ACTIVITY WITHIN 5NM.**

1. FUEL TRUCK GROUND WIRE ..... ATTACHED
2. AIRFRAME GROUND WIRE ..... ATTACHED
3. FUEL PUMP COUNTER ..... RESET
4. FUEL TRUCK VENT ..... OPEN
5. LADDER ..... OBTAIN & USE
6. NOZZLE GROUND WIRE ..... ATTACHED
7. FUEL ..... BOTH LEFT AND RIGHT TANKS

## -----AFTER REFUELING-----

8. FUEL CAPS ..... SECURE
9. FUEL TRUCK VENT ..... CLOSED
10. WINDSCREEN/LEADING EDGES ..... CLEAN
11. OIL QUANTITY ..... CHECK
12. OIL ..... REFILL AS REQUIRED
13. OIL CAN ..... STORE AT DESIGNATED BOX
14. OIL FILLER CAP ..... SECURE

## 29. PARKING AND SECURING

1. PITOT TUBE/THERMOMETER COVERS ..... INSTALL
2. TIE-DOWNS (3) OUTDOORS ..... SECURE
3. CHOCKS ..... INSTALL
4. HOBBS AND TACH TIME ..... RECORD
5. MASTER SWITCH ..... OFF
6. FUEL AND OIL QUANTITY ..... RECORD
7. WINDOWS, VENTS & CABIN AIR ..... CLOSE
8. CONTROL AND THROTTLE LOCKS ..... INSTALL
9. CHECKLISTS (3) ..... ON PILOT'S SEAT
10. SUN SCREEN ..... INSTALL
11. PERSONAL ITEMS/TRASH ..... REMOVE
12. ENGINE HEATER (OCT-APR) ..... PLUG IN
13. BIRD SCREEN (LAST AIRCRAFT IN) ..... CLOSE

**IF DISCREPANCIES FOUND, NOTIFY AERO CLUB STAFF AND ANNOTATE DISCREPANCIES ON MAINTENANCE FORM AND DISPATCH PROGRAM.**

